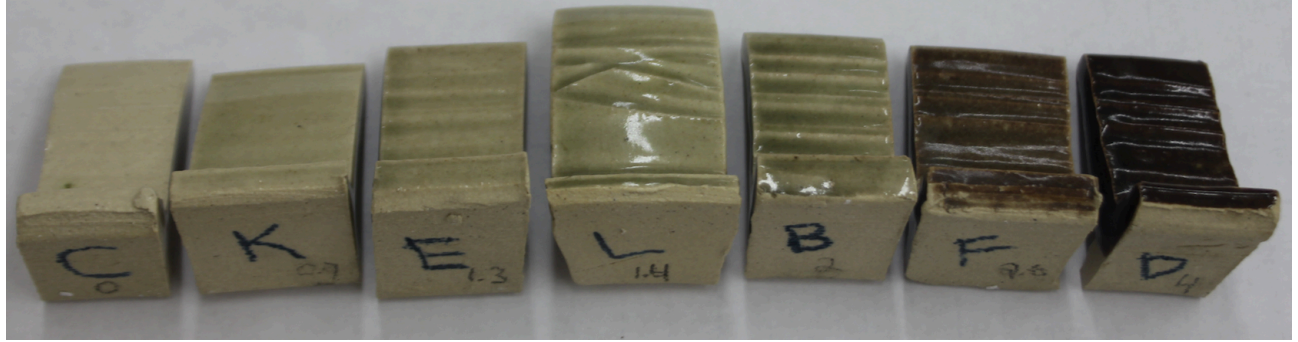


Grey Line

17.2



	B	C	D
Silica	31	31	31
Kaolin (EPK)	20	20	20
Potash Feldspar (Cluster)	17	17	17
Whiting	15	5	5
G. Borate	12	12	12
Dolomite	5	5	5
Strontium Carbonate	10	10	10
{Ni, Co, Fe, Cr, EPK}	2		4
(KNa)O [0.1 to 0.3]		0.137	
MgO [0 to 0.3]		0.143	
CaO [0.2 to 0.6]		0.460	
SrO		0.260	
ZnO [0 to 0.20]			
Al ₂ O ₃ [0.25 to 0.5]		0.398	
B ₂ O ₃ [0 to 0.3]		0.177	
SiO ₂ [0.25 to 0.4]		3.431	
Si:Al		8.61	

Notes:

{Ni, Co, Fe, Cr, EPK}

Nickel 3

Cobalt Ox 1

Iron (Spanish) 3

Chrome Ox 1 **change to ~0.2**

Kaolin (EPK) 10

C=0 K=0.7 E=1.3 L=1.4 B=2.0 F=2.6 D=4.0

Around 1.3 was the most pleasant grey mix. The hue is slightly more green than I would like. Surface had some crazing. High gloss, feels great. Works well in the textures.